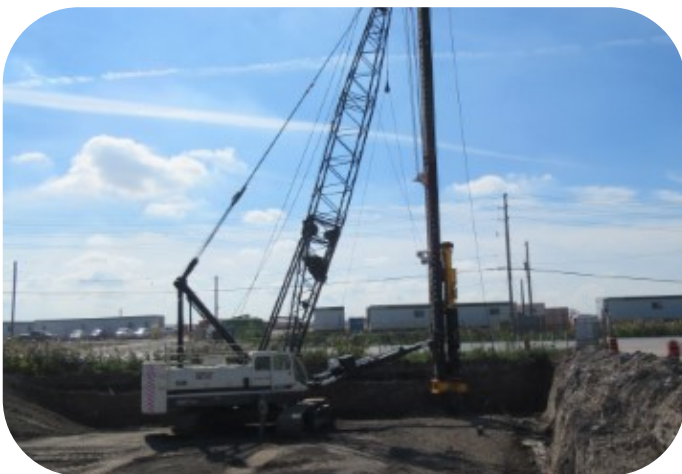


Bulletin #12: Construction Machinery

Construction on the Highway 427 Expansion Project has been underway since May 2018. Our crews have been busy constructing the widening (Finch Avenue to Highway 7) and extension (Highway 7 to Major Mackenzie Drive) sections of the roadway. An important part of their job is safely operating heavy construction machinery. In this bulletin you can learn more about some of the machinery that is used throughout the project area.



Pile Driver: Piles (poles) are driven into the ground to support the weight of structures. Pile drivers are cranes that hammer the poles into the ground. Pictured on the left, piles are being hammered into the ground at the new Langstaff Road structure.



Grader: This machine will flatten the road with a long blade to create an even surface for a paving machine to lay asphalt onto. Pictured on the left, this grader is preparing the median for paving on Highway 427.

<http://427expansion.ca>

ask@427expansion.ca

1-888-352-8085

Highway 427 Expansion CONSTRUCTION UPDATES



Paving Machine: A paving machine lays asphalt and concrete on the road surface. The machine will move at a constant pace to ensure that the surface is smooth.



Cranes: Cranes will lift girders which are steel beams onto the bridge piers (columns). Girders will support the bridge deck which is the surface of the bridge. Pictured on the left, two cranes are lifting girders onto the new bridge structure at Langstaff Road.

<http://427expansion.ca>

ask@427expansion.ca

1-888-352-8085



Highway 427 Expansion CONSTRUCTION UPDATES



Parts of a Bridge

Throughout the Highway 427 Expansion Project, 14 new bridges are being constructed. The components of each new bridge structure are pictured below:



Des renseignements sont disponibles en français en composant 1-888-595-3152.

<http://427expansion.ca>

ask@427expansion.ca

1-888-352-8085

