

BULLETIN #19:



Permanent Road Closure of McGillivray Road at Rutherford Road

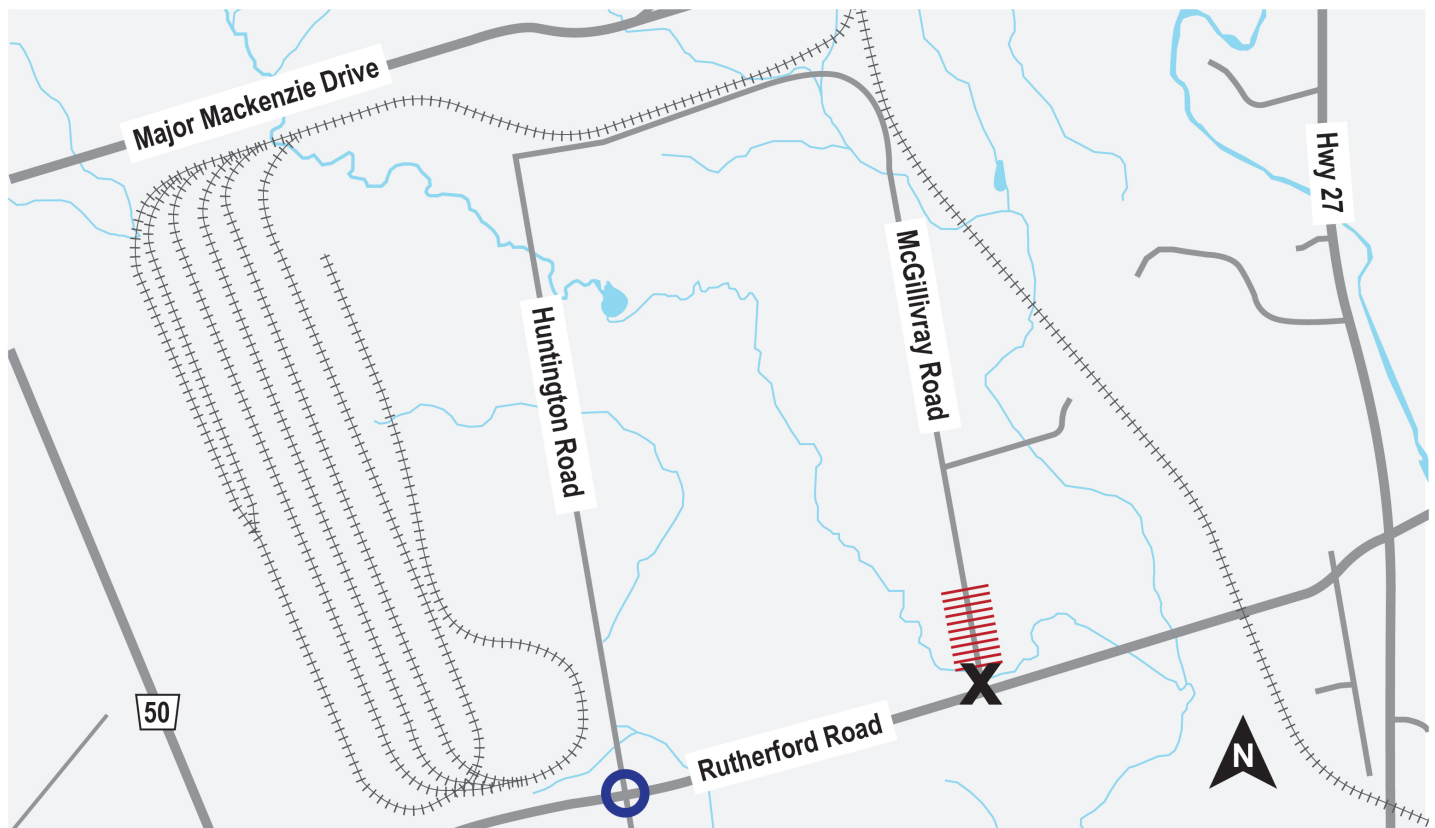
Starting on November 25, 2019

McGillivray Road at Rutherford Road will permanently close to the travelling public (e.g. vehicles, cyclists, pedestrians, etc.) and terminate at a cul-de-sac before Rutherford Road. Access to McGillivray Road after November 25, 2019 will only be possible via Huntington Road. A map showing the closure is provided below.

Authority for the permanent closing of various roads (including McGillivray Road) at the points where they intersect with the Highway 427 extension (from Highway 7 to Major Mackenzie Drive) was granted by the Ontario Municipal Board (Case #: MM160043) on October 7, 2016.

With the completion of work at the north end of McGillivray Road by the rail tracks (outlined in [Bulletin 13](#)), the temporary closure has ended. McGillivray Road will remain open to traffic throughout the balance of the Highway 427 Expansion Project.

We appreciate your patience and cooperation during this period of construction.



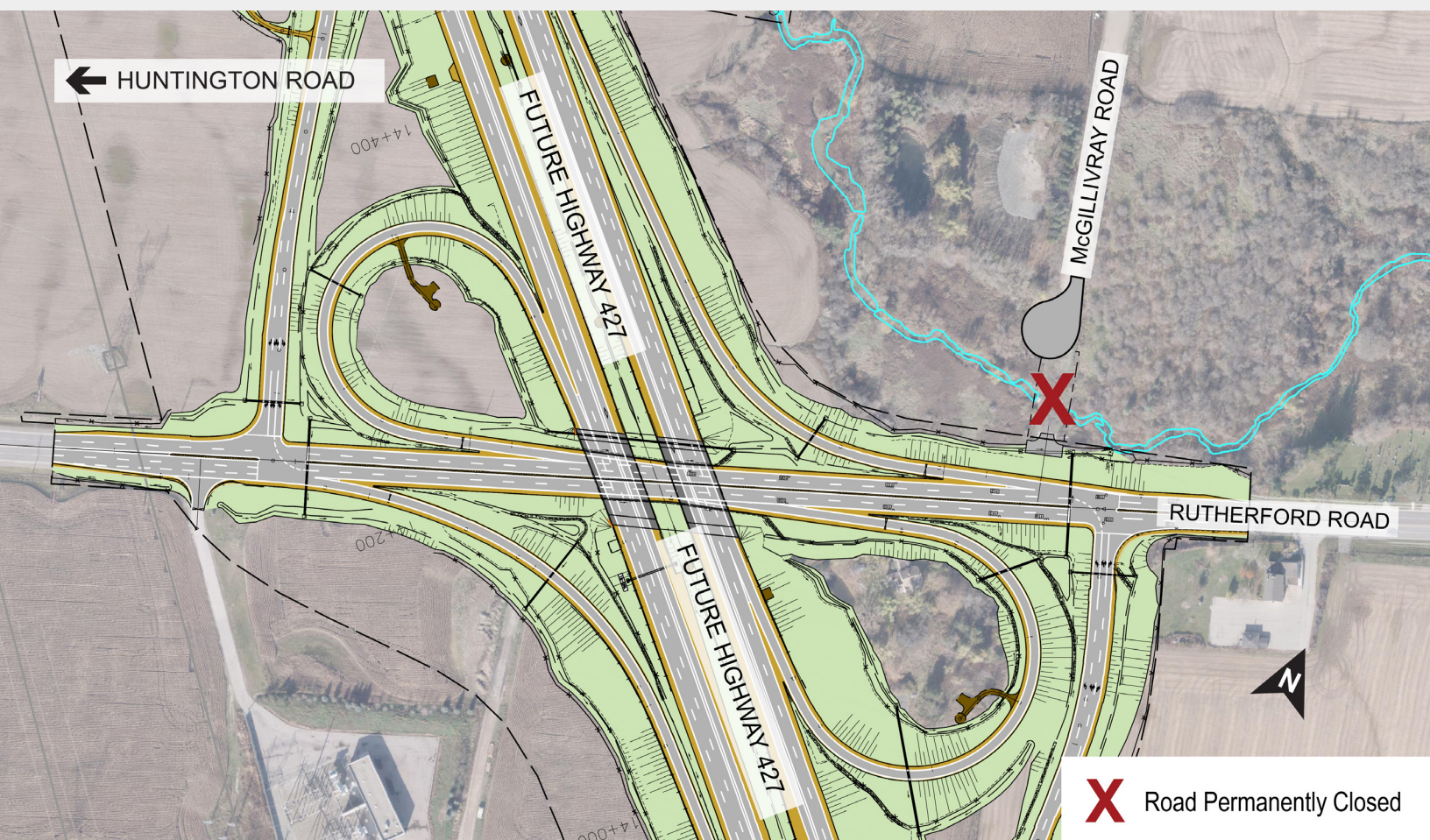
Permanent closure of McGillivray Road



Access to Rutherford Road from Huntington Road



Permanent closure point at the intersection of McGillivray and Rutherford Road



A design drawing showing the Highway 427 / Rutherford Road interchange configuration. The intersection of McGillivray Road and Rutherford Road must be closed to allow for Highway 427 construction.

What is the Highway 427 Expansion Project?

The Highway 427 Expansion project will extend the highway 6.6 km, from Highway 7 to Major Mackenzie Drive and widen the existing highway to 8 lanes between Finch Avenue and Highway 7.

Who is LINK427?

LINK427 is the consortium selected by the Ministry of Transportation (MTO) and Infrastructure Ontario (IO) to design, build, finance, and maintain the Highway 427 widening and extension.

Des renseignements sont disponibles en français en composant 1-888-595-3152.